

Reference Table - Conversion of Measurements



Pressure		
From	To	Conversion
psi	Kilopond/cm ² (kp/cm ²)	psi x 0.07031 = kp/cm ²
Kilopond/cm ² (kp/cm ²)	psi	kp/cm ² x 14.22 = psi
psi	Bar	psi x 0.07 = Bar
Bar	psi	Bar x 14.29 = psi

Linear Measure		
From	To	Conversion
Inch (in)	Millimeter (mm)	in x 25.4 = mm
Millimeter (mm)	Inch (in)	mm x 0.03937 = in
Zoll	Millimeter (mm)	Zoll x 25.4 = mm
Millimeter (mm)	Zoll	mm x 0.03937 = Zoll
Foot	Meter (m)	Foot x 0.3048 = m
Meter (m)	Foot	m x 3.281 = Foot
Yard	Meter (m)	Yard x 0.9144 = m
Meter (m)	Yard	m x 1.0936 = Yard
Miles (mils)	Kilometer (km)	mils x 1.609 = km
Kilometer (km)	Miles (mils)	km x 0.622 = mils

Forces		
From	To	Conversion
Pounds (lbs)	Newton (N)	lbs x 4.45 = N
Newton (N)	Pounds (lbs)	N x 0.225 = lbs
PS (horsepower)	Kilowatt (kW)	PS x 0.735 = kW
Kilowatt (kW)	PS (horsepower)	kW x 1.36 = PS

Weights		
From	To	Conversion
Pounds (lbs)	Kilopond/cm ² (kp/cm ²)	lbs x 0.45 = kp/cm ²
Kilopond/cm ² (kp/cm ²)	Pounds (lbs)	kp/cm ² x 2.2 = lbs
Ounces (oz)	Gramm (g)	oz x 28 = g
Gramm (g)	Ounces (oz)	g x 0.035 = oz
Pounds (lbs)	Kilogramm (kg)	lbs x 0.4536 = kg
Kilogramm (kg)	Pounds (lbs)	kg x 2.205 = lbs

Torque		
From	To	Conversion
Foot-pounds (ft-lbs)	Newton-Meter (Nm)	ft/lbs x 1.35 = Nm
Newton-Meter (Nm)	Foot-pounds (ft-lbs)	Nm x 0.74 = ft/lbs
Newton-Meter (Nm)	Kilopond/cm (kp/cm)	Nm x 0.102 = kp/cm

Additional Products Available Upon Request



Additional Products Available Upon Request



Clamping Tools

Handles
Adjustable Tension Levers
Adjustable Handles
Cam Levers

Eccentric clamp modules
K0754



Clamp straps
slotted heel
K0001

Clamp straps
assorted,
long slot
K0002



Clamp strap assemblies
K0003



Clamp strap goose-necked
with adjustment unit
K0004



Hinge pins
K0007



Single cam levers
K0008



Double cam levers
K0009



Single cam clamps
K0010



Double cam clamps
K0011



Hook clamps
K0012



Hook clamps
with collar
K0013



Hook clamps ground
Form A/B/C
K0014



Hook clamps
with collar
K0015



Hook clamps
with mounting bracket
K0016



Hook clamp holders
K0017



Riser cylinders
K0018



Swing clamps
K0019



Additional Products Available Upon Request



Clamping Tools

Clamping element "arness"
K0021



Fixture clamps machinable
K0022



Fixture clamps unequal hexagon
K0023



Spiral cam screws
K0024



Cam screws with knife edge washer
K0025



Cam screws with hexagon washer
K0026



Cam screws with hexagon washer,
for T-slots
K0027



Cam clamps with riser
K0028



Toe clamps for T-slots
K0029



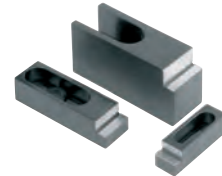
Chock clamps
K0030



Cam clamps adjustable
with riser
K0031



Riser stops
K0032



Side clamps
K0033



Side clamps
K0034



Side clamps
K0035



Toe clamps compact
K0036



Wedge clamps
K0037



Wedge clamps machinable
K0038



Additional Products Available Upon Request



Clamping Tools

Clamping Devices
Quick-Acting Clamps
Hook Clamps
Taper Clamping Units

Wedge clamps
jaw face smooth or serrated
K0039



Wedge clamps
machinable
K0649



Adjustable Clamp and Tension Levers
Ratchet Levers

Tension levers safety
internal thread
K0112



Tension levers safety
external thread
K0112



Ratchet levers with
internal thread
K0128



Ratchet levers with
reamed hole
K0128



Ratchet levers with
square socket
K0128



Additional Products Available Upon Request



Clamping Tools

Clamping Joints

Clamping joints
K0133



Clamping joints
individually adjustable
K0134



Multiple connectors
K0135



Clamping joints
K0136



Tommy bars
with fixed or sliding T-bar,
DIN 6305 or DIN 6307
K0755



T-thrust screws
with fixed or movable T-bar,
DIN 6304 or DIN 6306
K0756



Crank Handles

Crank handles offset
similar to DIN 468
K0684



Crank handles straight
similar to DIN 469
K0685



Crank handles aluminium
K0727



Crank handles balanced
K0728



Magnets



Additional Products Available Upon Request

Operating Parts



Knurled Nuts Quick-Acting Knurled Nuts Knurled Thumb Screws

Knurled nuts
plastic
K0138



Knurled nuts quick-acting
K0139



Knurled thumb screws
plastic
K0141



Knurled knobs
K0142



Knurled nuts high
steel and stainless steel, DIN 466
K0143



Knurled nuts flat
steel and stainless steel, DIN 467
K0144



Knurled knobs
K0110



Knurled heads
for hexagon socket screws
K0680



Star and Palm Grips Knobs Ball Knobs

Palm grips
similar to DIN 6335
K0148



Star grips
similar to DIN 6336
K0152



Knobs flat
K0157



Ball knobs smooth
DIN 319 enhanced
K0159



Palm grips
plastic coated grey cast iron,
DIN 6335
K0682



Ball grips revolving
K0726



Additional Products Available Upon Request



Operating Parts

**Non-Adjustable Clamp Levers
Control Handles
Triangular Star Grips
Five Lobe Grips**

Levers
DIN 99
K0174



Clamping levers
non-adjustable
K0175



Control handles
K0176



Control handles flat
K0177



Lock grip
K0178



T-grips
K0180



T-grips
K0181



Wing screws
with a counter grip
K0182



Clamping grips tristar
with high collar
K0183



Five lobe grips
K0185



Wing grips
for hexagon socket screws
K0681



Additional Products Available Upon Request



Operating Parts

**Stirrup-Shaped Handles
Machine and Apparatus Handles
Tube Handles
Profile Handles, Folding Handles**

Pull handles
K0189



Pull handles
K0192



Pull handles arch
K0193



Pull handles arch
K0194



Pull handles
K0195



Pull handles arch
K0196



Pull handles oblique
K0197



Pull handles with soft inner face
K0171



Pull handles
K0199



Pull handles round
K0203



Pull handles
K0205



Pull handles angled
K0207



Pull handles tubular
K0209



Pull handles tubular
K0210



Pull handles tubular
K0211



Pull handles tubular oblique
K0212



Pull handles
K0213



Additional Products Available Upon Request



Operating Parts

Pull handles
high-gloss chromed
K0214



Pull handles
K0216



Pull handles
K0217



Pull handles fold-down
K0218



Pull handles angled
K0219



Tubular handles angled
K0220



Pull handles tubular
K0221



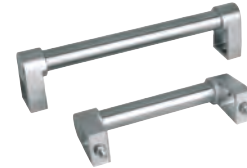
Pull handles tubular
K0222



Pull handles tubular
K0223



Pull handles tubular
stainless steel
K0652



Pull handles tubular
K0224



Pull handles tubular
K0226



Pull handles
K0228



Pull handles angled
K0229



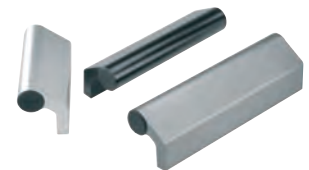
Pull handles
K0230



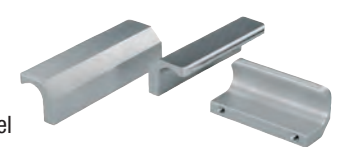
Ledge handles
K0232



Ledge handles
K0130



Ledge handles stainless steel
K0233



Additional Products Available Upon Request



Operating Parts

Ledge handles
K0234



Pull handles fold-down
K0241



Pull handles tubular
K0131



Recessed handles
K0242



Tubular handles angled
K0132



Recessed handles fold-down
stainless steel
K0243



Tubular handles angled
K0235



19"

Pull handles angled
K0244



Pull handles tubular
K0236



19"

Pull handles
open-ended screw on
K0237



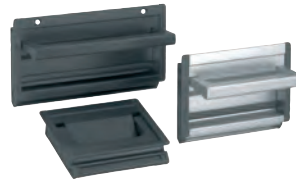
Telescopic slides

Recessed handles
K0238



19"

Recessed handles fold-down
K0239



19"

Recessed handles fold-down
K0240



19"



Additional Products Available Upon Request



Novo-Grip

Control knobs
K0248



Control knobs
K0249



Spherical knobs
revolving
K0254



Cylindrical grips
safety automatic return
K0265



Crank handles
with safety grip
K0268



Deltawheels
K0275



Ribbed grips
K0276



Knurled torque knobs
K0277



Sympa Touch

Four lobe grips flat
K0278



Five lobe grips
K0279



Clamping grips high form
K0280



Clamping grips fluted
K0281



Palm grips soft
K0613



Additional Products Available Upon Request



Machine and Jig Devices

Toggle Locators Thrust Bolts Locating Bolts Locating Feet

Self-aligning pads
K0282



Self-aligning pads
swivel angle 14° and 20°
K0283



Self-aligning pads
with O-ring
K0284



Self-aligning pads
with o-ring and
exchangeable inserts
K0285



Self-aligning pads
self-righting
K0286



Self-aligning pads adjustable
K0287



Self-aligning pads, adjustable
with O-ring
K0288



Self-aligning pads adjustable
with o-ring and
exchangeable inserts
K0289



Self-aligning pads adjustable
with o-ring and hexagon socket
K0290



Self-aligning pads adjustable
with o-ring,
exchangeable inserts and
hexagon socket
K0291



Rest pads
K0294



Rest pads
with positioning pin
K0295



Feet
with threaded pin, DIN 6320
(edition 1971)
K0296



Support bolts
K0297



Fixture feet with external thread
K0300



Fixture feet
with internal thread
K0301



Self-aligning pads
swivel angle 12°
K0302



Additional Products Available Upon Request



Machine and Jig Devices

Locating feet
K0303



Rest pad
K0305



Rest pads adjustable
with locknut
K0306



Rest pads
K0307



Jack screws
K0308



Spring Plungers

Spring plungers
with slot and POM ball
K0311



Spring plungers
with slot and stainless steel ball
K0312



Spring plungers
with end position feedback
K0656



Spring plungers with hexagon socket
and thrust pin, long version
K0657



Spring plungers
with head
K0331



Locators
K0332



Spring plungers
smooth version without collar,
stainless steel
K0335



Spring plungers
with head
K0336



Additional Products Available Upon Request



Machine and Jig Devices

Indexing Plungers Locking Bolts with grip Screws Nuts

Indexing plungers
for thin-walled parts
K0735



Indexing plungers - Premium
with tapered pin
K0736



Bushes tapered
K0736



Indexing plungers - Premium
with cylindrical pin
K0736



Bushes cylindrical
K0736



Indexing plungers
without collar
K0344



Indexing plungers
without collar
K0345



Indexing plungers
without collar
K0346



Indexing plungers
without collar
K0347



Indexing plungers
without collar
K0636



Mounting brackets
K0638



Cam-action indexing plungers
K0639



Cam-action indexing plungers
stainless steel
K0640



Barrel slide bolts
K0349



Studs
DIN 6379
K0697

T-slot bolts
DIN 787
K0698

T-slot bolts
DIN 787, 12.9
K0699



Hexagon nuts thin
DIN 439
K0700

Hexagon nuts with collar
height 1.5xD,
DIN 6331
enhanced
K0701

Hexagon nuts Form B
height 1.5xD,
DIN 6330
enhanced
K0702



C-washers
DIN 6372
enhanced
K0730

C-washers
captive
DIN 6371
K0703



Additional Products Available Upon Request



Machine and Jig Devices

Shoulder screws with
slotted flat head
DIN 923
K0704



Shoulder screws
similar to DIN
ISO 7379
K0705

Shoulder
screws
with hexagon
head, DIN 609
K0706



Grub screws with flat point
hexagon socket DIN 913
K0707



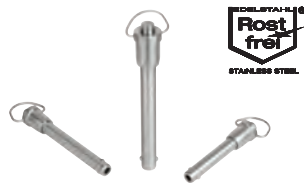
Screws with countersunk head
hexagon socket DIN 7991
K0708



Parallel Keys
DIN 6885 A
K0696



Ball lock pins
with grip ring, self-locking,
stainless steel
K0746



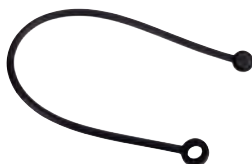
Locking pins with
key ring
K0365



Locking pins with
folding latch
K0776



Safety band
K0743



Locating Bolts
Clamping Plugs
Precision Locking Bolts
Sleeves for Precision Locking Bolts
Ball Locking Bolts
Lateral Spring Plungers

Positioning pins cylindrical
not ground
K0353



Positioning pins free-milled
not ground
K0355



Locating pins expanding
K0356



Mandrel collets
K0357



Mandrel collets
with side lock
K0643



Centring clamps
with ball or hexagon segments
K0358



Centring clamps
with ball or hexagon segments
K0644



Additional Products Available Upon Request



Machine and Jig Devices

Lateral spring plungers
without thrust pin
K0370



Lateral spring plungers
with threaded sleeve
K0371



Lateral spring plungers
with threaded sleeve,
without thrust pin
K0372



Push-Pull spring plungers
K0373



Lateral spring plungers
K0374



Shaft clamping units
K0375



Spherical washers
DIN 6319, edition 10/01
K0729



Clamp Hubs
Nuts for T-slots
Ball Pressure Screws
Grippers

Grub Screws, Thrust Pads
Eye Bolts
Threaded Inserts
Position Indicators

Clamp hubs
K0376



Nuts for T-slots
DIN 508 enhanced
K0377



Nuts for T-slots
blanks
K0378



Nuts for T-slots
rhombic form
K0379



Ball-end thrust screws
with head
K0380



Ball-end thrust screws
with head
stainless steel
K0381



Ball-end thrust screws
without head
with fine thread
K0382



Additional Products Available Upon Request



Machine and Jig Devices

Ball-end thrust screws
without head
with full ball
K0383



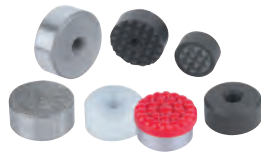
Ball-end thrust screws
without head
with flattened ball
K0383



Ball-end thrust screws
without head
stainless steel
with full ball
K0384



Round grippers and inserts
K0385



Hexagonal grippers
K0386



Square grippers
K0387



Adjustable grippers
K0388



Thrust screws
K0389



Thrust screws with
radiused half-dog point
K0403



Thrust screws with point
K0272



Pressure spindles
K0394



Eye bolts
DIN 444, Form B
K0396



Clevis
with external thread
K0397



Threaded inserts
K0398



Threaded inserts reinforced
K0399



Threaded inserts solid body
K0400



Threaded inserts
with internal thread, self-locking
K0401



Threaded inserts reinforced
internal thread, self-locking
K0402



Additional Products Available Upon Request



Machine and Jig Devices

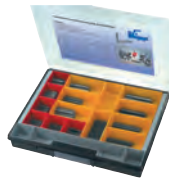
Repair kit
K0653



Studs
with screw-in stop for gluing in
K0404



Stud sets
with screw-in stop for gluing in
K0405



Shaft collars set screw
DIN 705, steel

K0406
Shaft collars set screw
DIN 705,
stainless steel
K0406



Shaft collars with wing grip
similar to DIN 705,
steel
K0407



Shaft collars one-piece
K0611
Shaft collars two-piece
K0612



Position indicators
K0408
K0409
K0410



Position indicators
freely programmable
K0771



Reducing bushings
K0412



Intermediate plates
K0413



Mounting brackets
K0414



Additional Products Available Upon Request



Machine and Jig Devices

Swivel Pads Swivel Feet Screw-in Plugs

Swivel feet plates
plastic
K0415



Swivel feet plates
die-cast zinc or stainless steel
K0416



Swivel feet plates extended
plastic
K0654



Swivel feet plates extended
die-cast zinc
K0417



Levelling feet plates extended
die-cast zinc
K0426



Swivel feet threaded spindles
steel or stainless steel
K0421



Levelling feet threaded spindles
steel or stainless steel
K0427



Levelling feet ECO-Line threaded
spindles
steel or stainless steel
K0429



Swivel feet ball joints
with internal thread
K0422



Swivel feet plates
stainless steel
K0418



Swivel feet plates
with vibration absorption
K0419



Levelling feet plates
plastic
K0423



Levelling feet plates plastic,
heavy-duty version
K0424



Levelling feet plates
die-cast zinc or stainless steel
K0425



Levelling feet plates ECO-Line
die-cast zinc,
stainless steel or plastic
K0428



Tube inserts square
with tapped bush
K0430



Tube inserts round
with tapped bush
K0431



Additional Products Available Upon Request

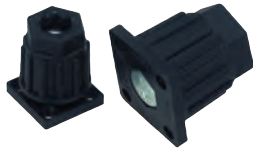


Machine and Jig Devices

Levelling feet
for aluminium profiles
K0432



Levelling feet
K0433



Levelling feet threaded spindles
steel or stainless steel
K0669



Levelling feet plates
steel or stainless steel
K0672



Levelling feet plates
with rubber base
steel or stainless steel
K0673



Levelling feet
steel or stainless steel
K0739



Levelling feet
stainless steel for sterile areas
K0741



Swivel feet
steel
K0742



Swivel Feet
K0674 - K0677



Cap elements
type H2
K0686



Machine feet
K0687

Levelling feet
K0678



Levelling feet caps
K0679



Additional Products Available Upon Request



Machine and Jig Devices

Hinges

Hinges
plastic, lift-off, left
K0434



Hinges
plastic, lift-off, right
K0434



Hinges
plastic, with locking lever
K0436



Hinges
plastic, with elongated holes
K0437



Hinges
plastic, lift-off, with guide tabs
K0438



Hinges
plastic, with adjustable friction
K0440



Hinges
die-cast zinc, with locking lever
K0442



Hinges
aluminium, lift-off, left
K0579



Hinges
aluminium, lift-off, right
K0579



Additional Products Available Upon Request



Machine and Jig Devices

Oil Level Gauges
Plugs
Screw Plugs
Vent Screws
Dipsticks
Filler Necks

Oil level gauges
K0443



Oil level gauges
K0444



Oil level sight glasses
K0445



Oil level sight glasses
press-in
K0446



Oil level sight glasses
domed
K0447



Oil level sight glasses
aluminium
K0448



Plugs to screw-in
K0449



Plugs to screw-in
K0450



Plugs to press-in
K0451



Plugs magnetic
plastic
K0452



Plugs magnetic
aluminium
K0453



Plugs fill and drain
hexagon cap
K0454



Plugs fill
knurled cap
K0455



Caps for filler necks
K0456



Vent screws
K0457



Vent screws
with splash guard
K0458



Additional Products Available Upon Request



Machine and Jig Devices

Vent screws
with check valve
K0459



Vent screws brass
K0460



Vent screws brass
with check valve
K0461



Plugs to press-in
with dipstick
K0462



Vent screws
with dipstick
K0465



Vent screws
with check valve and dipstick
K0467



Dipsticks
K0468



Filler necks
K0470



Filler necks
K0471



Tubular Connection System Clamp Parts Reducing Bushes Tubes

Protective Stops Linear Units Screw Connections

Tube clamps cross, plastic
K0472



Tube clamps cross, aluminium
K0472



Tube clamps cross, aluminium
K0472



Tube clamps cross, plastic
K0473



Tube clamps cross, aluminium
K0473



Tube clamps cross, plastic
K0474



Tube clamps cross, plastic
K0474



Additional Products Available Upon Request



Machine and Jig Devices

Tube clamps
T-angle, plastic
K0475



Tube clamps
T-angle, aluminium
K0475



Tube clamps
T-angle, plastic
K0476



Tube clamps
T-angle, aluminium
K0476



Tube clamps right-angle,
aluminium
K0476



Tube clamps base, plastic
K0477



Tube clamps base, aluminium
K0477



Tube clamps base, plastic
K0478



Tube clamps base, aluminium
K0478



Tube clamps flange, plastic
K0479



Tube clamps flange, aluminium
K0479



Tube clamps flange, aluminium
K0479



Tube clamps flange, plastic
K0480



Tube clamps flange, aluminium
K0480



Tube clamps straight, plastic
K0481



Tube clamps straight, plastic
K0483



Tube clamps
swivel half, sunken teeth, plastic
K0484



Tube clamps
swivel half, raised teeth, plastic
K0485



Additional Products Available Upon Request



Machine and Jig Devices

Tube clamps
swivel half, sunken teeth, plastic
K0486



Tube clamps
swivel base, sunken teeth, plastic
K0487



Tube clamps swivel, plastic
K0488



Tube clamps swivel, aluminium
K0488



Tube clamps swivel, plastic
K0489



Tube clamps swivel, aluminium
K0489



Tube clamps swivel base, plastic
K0490



Tube clamps swivel base, aluminium
K0490



Reducer sleeves
square
K0491



Reducer sleeves
round
K0492



Round and square tubes
K0493



Tube end plugs
K0494



Linear actuators
K0495



Linear actuator connector clamps
cross
K0496



Linear actuator connector clamps
cross
K0497



Linear actuator connector clamps
flange
K0498



Linear actuator connector clamps
base
K0499



Dial gauge collets
for Ø8 shafts
K0629



Additional Products Available Upon Request



Machine and Jig Devices

Square tube connectors
straight
K0615



Square tube connectors
two-way
K0616



Square tube connectors
three-way, flat
K0617



Square tube connectors
four-way, flat
K0618



Square tube connectors
three-way
K0619



Square tube connectors
four-way
K0620



Square tube connectors
five-way
K0621



Square tube connectors
six-way
K0622



Square tube connectors
three-way with tapped hole
K0623



Square tube connectors
four-way with tapped hole
K0624



Square tube connectors
two-way swivel
K0625



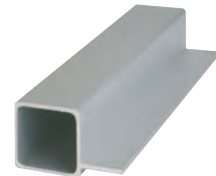
Square tube connectors
three-way swivel
K0626



Square tubes
K0627



Square tubes
finned
K0628



Additional Products Available Upon Request



Machine and Jig Devices

Joints



Transport technology



Scales, Scale Rings



General Information about:

KIPP Clamping Tools

KIPP Operating Parts

Novo-Grip

Sympa Touch

KIPP Machine and Jig Devices



Materials:

POM = Polyoxymethylene - Delrin®

Deviating from the standard design, other materials and quality classes are available on request.

Surface finishes:

Other surface finishes are available at additional cost, e.g. matt-finished or high-polish chromium-plated steel parts.

Other colors are also available on request for plastic coatings or moulded plastic parts.

Threads:

Threads are manufactured to ISO DIN 13 medium tolerance class, i.e. 6H for nut threads and 6g for bolt threads. External threads up to 60 mm are generally supplied fully threaded. Screw lengths of 70 mm and more are supplied with 60 mm long threads.

Threads of aluminum grips:

Especially threads of aluminum grips cannot be true to gauge size due to final surface finish refinement and the removal of material during related pretreatment.

The majority of these threads are moulded in order to strengthen the material. As a result, the tearing resistance of aluminum for a thread with M5x10 is higher than 2000 N.

Special versions:

KIPP Clamp and Tension Levers can also be supplied on request with predrilled inserts, locating holes, locating bolts for pinning and other thread ends to DIN 78 (except for flat point) and to DIN 6332.

As a basic rule, you can rely on us as a competent partner for your daily clamping needs. We are always happy to advise you.

Thread Pitch Chart:

Metric Coarse Thread:

M3 X 0.5
M4 X 0.7
M5 X 0.8
M6 X 1.0
M8 X 1.25
M10 X 1.5
M12 X 1.75
M14 X 2.00
M16 X 2.00
M18 X 2.50
M20 X 2.50
M22 X 2.50
M24 X 3.00

Metric Fine Thread:

M3 X 0.35
M4 X 0.50
M5 X 0.50
M6 X 0.75
M8 X 1.00
M10 X 1.25
M12 X 1.50
M14 X 1.50
M16 X 1.50
M18 X 1.5
M20 X 1.5
M24 X 1.5
M24 X 2.0

Conversion Chart:

10mm = .39"
12mm = .47"
15mm = .59"
20mm = .79"
25mm = .98"
30mm = 1.18"
25mm = 1.38"
40mm = 1.57"
45mm = 1.77"
50mm = 1.97"
55mm = 2.17"
60mm = 2.36"
70mm = 2.76"
80mm = 3.15"
90mm = 3.54"

General Terms and Conditions



Kipp Inc. (“Kipp”) is pleased to present its products to industry. All products are sold under our standard terms and conditions of sale, which include an express warranty, warranty disclaimers, and limitations of remedies and responsibilities. Kipp reserves the right to delete products and to make improvements, changes or modifications to all products manufactured or sold by Kipp, without incurring any liability to incorporate these changes in any part or component - past, present or future. Any specifications, guidelines, technical data and other information provided herein supersede all previous similar information published by Kipp unless specifically provided in writing by Kipp pursuant to a specific inquiry. All information provided by Kipp, regardless of nature or form, is prepared in good faith based upon our experience, mathematical models, and/or scientific models as general information only. Any suggestion or projections offered in writing, by phone, in person, or in any other form are provided in good faith, but since the functionality and reliability of Kipp products can vary with the application and with the equipment and other components with which it is used, and user skills, all warranties (other than the Kipp non-assignable standard express written warranty given to direct purchasers from Kipp), such as any implied warranty or merchantability or fitness for a particular purpose, are disclaimed.

Kipp products are generally sold through distributors and Kipp disclaims all warranties to indirect purchasers of Kipp product. Purchasers should contact their sellers with any claims related to Kipp products. Kipp is not responsible in contract, tort, or otherwise for any inaccuracies or for any direct, incidental or consequential damages resulting therefrom or from the purchase, use, storage or sale of Kipp products. Any suggestion or projection should be fully analyzed and/or tested by the customer before selecting any Kipp product or taking any action based thereon. Kipp products are often used in specialized complex applications. Post delivery field engineering and changes may be required by users to obtain the best results possible in any particular application. Please call our Engineering Department or Sales Department at (866) 547-7166 if you have further questions. All information furnished is subject to the foregoing disclaimers and limitations.

The publication of this catalog renders all earlier publications invalid. Dimensions and other information is correct at the time of printing.

We reserve the right to make technical changes. We also cannot be held liable for printing errors that may occur in this publication.

Reprint and reproduction, even excerpts, are only allowed with KIPP Inc. permission.

KIPP Inc.

Copyright KIPP Inc.

WE01USCAT1507